



**huntoffice**  
interiors™

Design | Fit-Out | Deliver

# HOUSE POD

*"Discover a new sense of focus"*

Environments characterized by chaos and interruptions often lack focus, leading to diminished productivity and creativity.

A dedicated space for focus, offering a serene and comfortable environment, tackles these issues efficiently

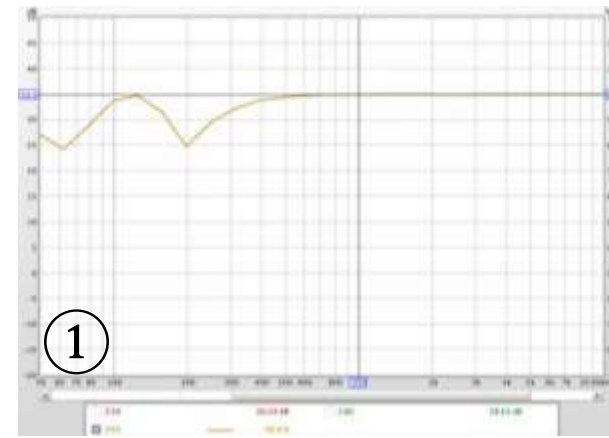


# Personal Focus Space

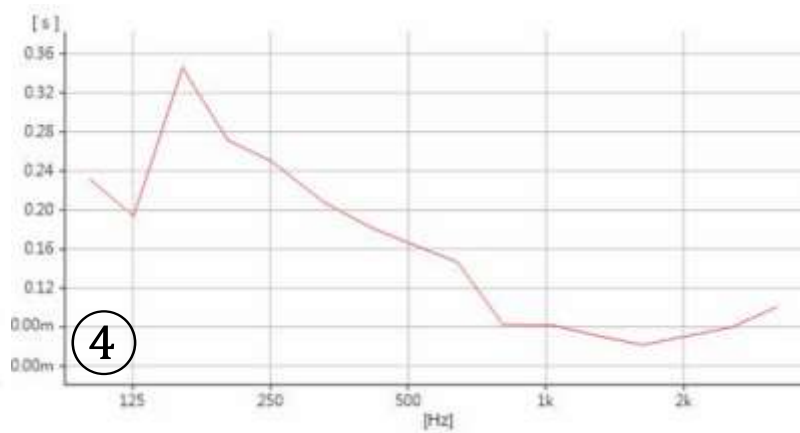
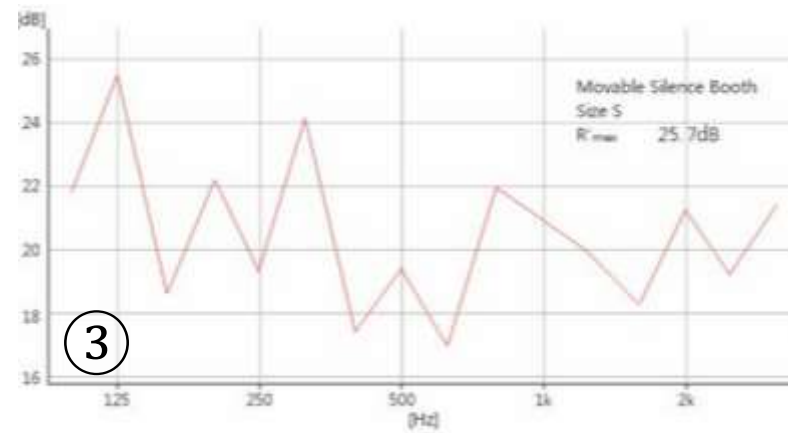
Optimized for reading, working, studying or hobbies  
**Be focused.**

STC 25dB ( $\pm 3$ dB)  
& RT0.25s ( $\pm 0.1$ s)

Maintaining a quiet environment that is made for concentration, learning, thinking and reading, is vital for progress in stressful situations.



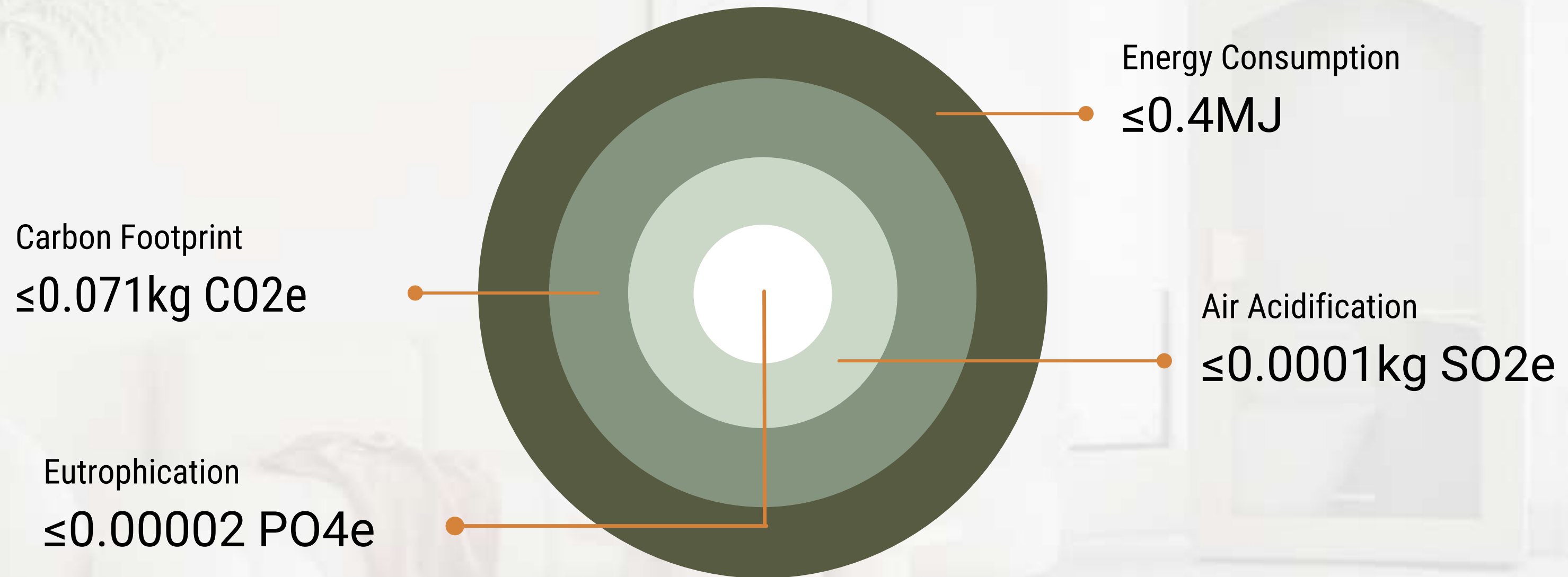
- Speech Intelligibility ①
- Frequency Response ②
- Reverberation Time Test ③
- Sound Insulation Test ④



# Acoustic Index



# Environmental Friendly



**The "HOUSE POD"** can be easily relocated within minutes.

By adjusting the levelling legs, the castors can seamlessly take over and transport the "HOUSE POD" to any desired location

The castors are attached securely to the steel base panel, capable of supporting up to 100kg.

# Flexibility



**Focus** wherever you desire.

Every aspect is taken into account with the “HOUSE POD”, including top-notch acoustic technology, versatility, and safety features.

Each element is carefully thought out to enhance the looks of your environment.

In addition, the assembly process can be finished within just 30 minutes.

# Easy to Install



# POD Furniture

Equipped with all the essentials, including a soft couch, sturdy tabletop, bright LED-lamp, powerful power socket, and built-in ventilation, the “HOUSE POD” contains everything you need.

The PIR motion sensor is designed to conserve energy by automatically shutting off when no movement is detected for 5 minutes



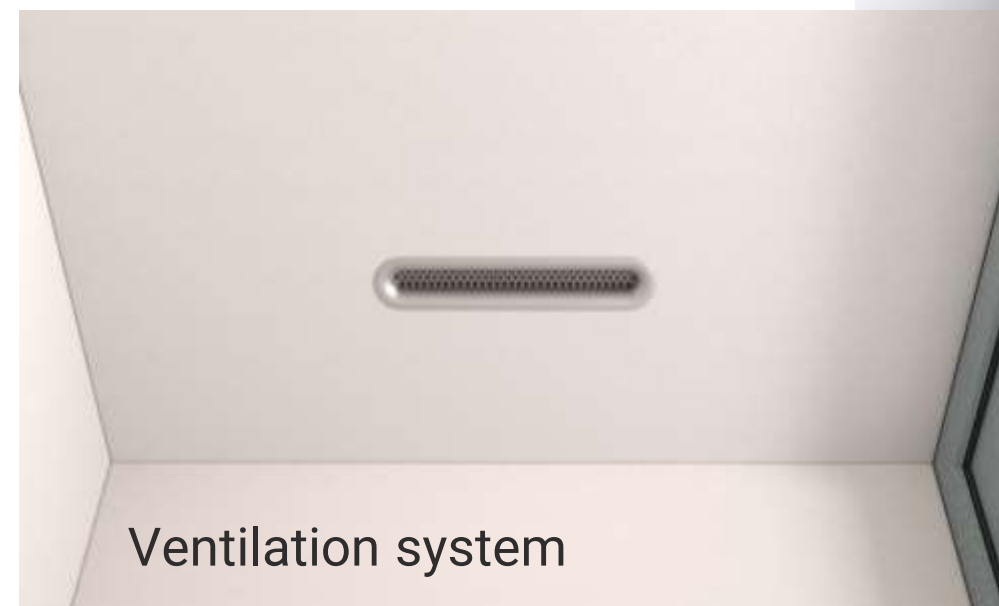
Ventilation system



Door hand



LED light & tabletop



Ventilation system



Aerial view

# HOUSE POD #Acoustic

## External Finish

6063-T5 aviation aluminum door frame;  
Overall cladding technology sound-insulation cloth;  
Supported by 15 + 15mm carbon polymer panels  
and a steel frame at the bottom, equipped with  
movable casters

## Interior Finish

9mm thick polyester fiber sound absorption panel +  
wrap technology acoustic fabric

## Specification size

[External] W1100\*D900\*H2100MM

[Internal] W990\*D800\*H1950MM

[Weight] 200KG

[Weight capacity] 100KG



## Made of 3 types of boards:

5mm carbon polymer panels on both sides and the back,  
30mm honeycomb panels on the top.



### **Lighting**

4000K (150Lx) Daylight LED lighting brightness adjustable

### **Floor**

full pavement technology sound-absorbing carpet

### **Door**

6063-T5 aviation aluminum frame, 3mm+3mm super white laminated acoustic glass

### **Desk**

Multi-layer solid wood board desktop (desktop height can adjust 700 to 750mm from the base panel), desktop size W760\*380\*30mm

**Hinges** concealed heavy-duty hinges

### **Ventilation volume**

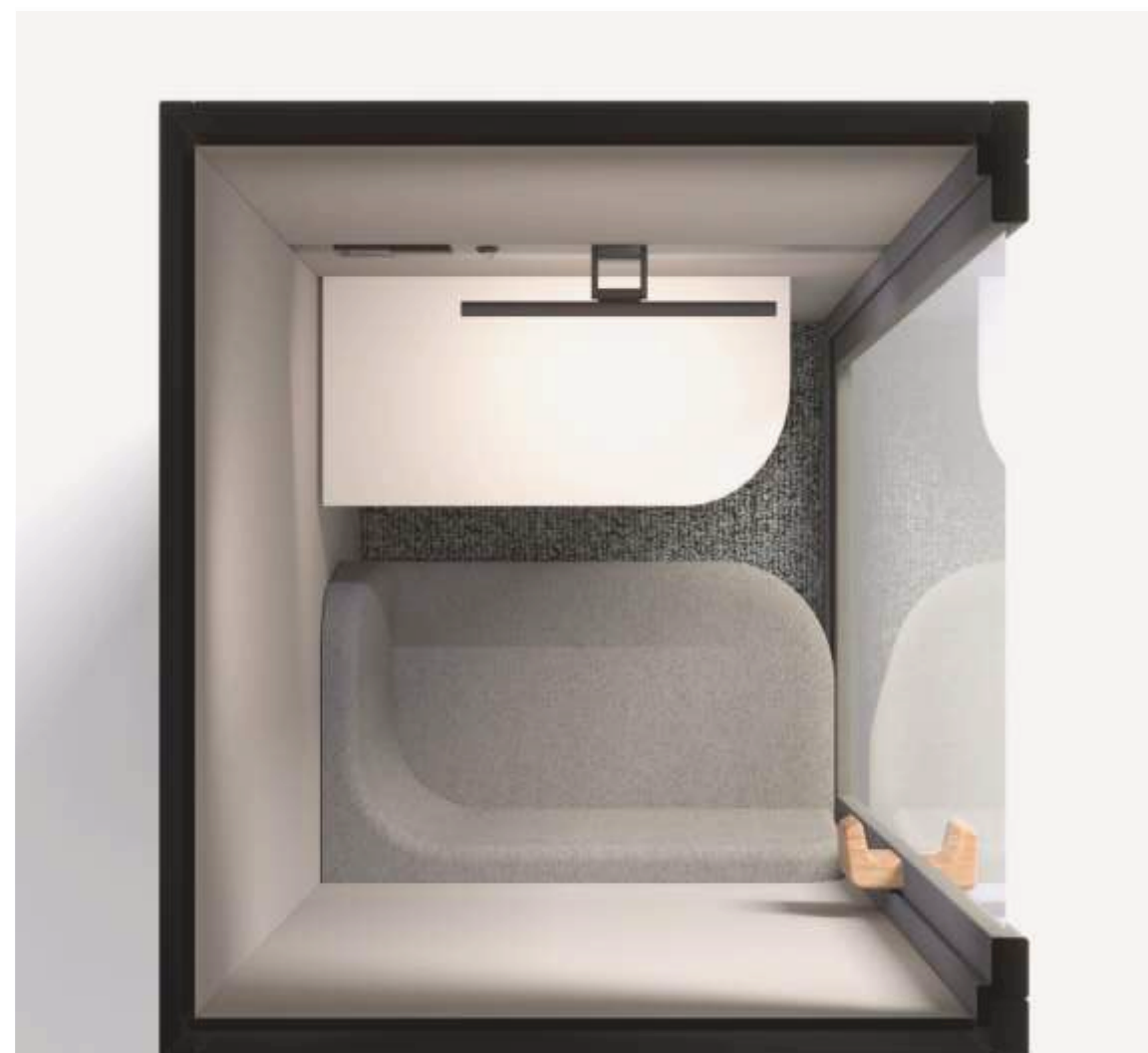
30 m3 of fresh air circulated every hour, equipped with Turbo fresh air system

### **Motion sensor**

infrared human body sensor, powers off after 5 minutes of inactivity

### **Power socket**

the number of sockets in the HOUSE POD can meet daily usage needs (five holes sockets with USB)



HOUSE POD  
#Acoustic



Directly available from our warehouse (10-15 Working Days)

#Acoustic



Available with longer lead times



Olive



Sand



Daisy



Ash



Blossom



Slate

# Colour Options

Using **Morandi colours** ensures a smooth and stylish transition of the “HOUSE POD” Into various types of environments